



# Sentinel™ Vision

## AI Open-Carry Weapons Detection

### Overview

First Responder Technologies' Sentinel™ Vision Smart AI Camera has been developed to provide fast and accurate situational awareness – when it matters most.

The all-in-one solution with the computing and detection at the edge allows for fast detection of weapons and sending of notifications. With end-to-end features and no additional hardware or software required, this truly is an out of the box solution.

The detection of weapons is becoming more and more important.

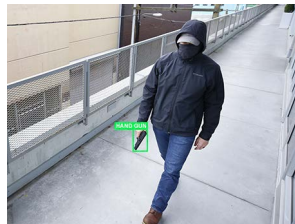
Sentinel™ Vision aims to prevent attacks and protect public or private spaces.

### Key Operational Advantages

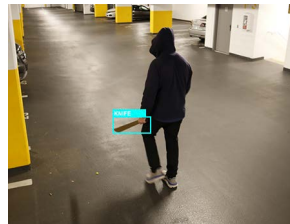
- Detects openly carried Handguns, Long Guns, and Knives.
- Gives autonomous alerts via Sentinel™ Threat Management System.
- Delivers alerts and video to any connected device.
- Minimal latency.
- Computing is done at the edge, eliminating the cost of large, ongoing cloud computing.
- Delivers precise position and status of threats.
- Reduces demands on manning.



Long Gun Detected



Handgun Detected



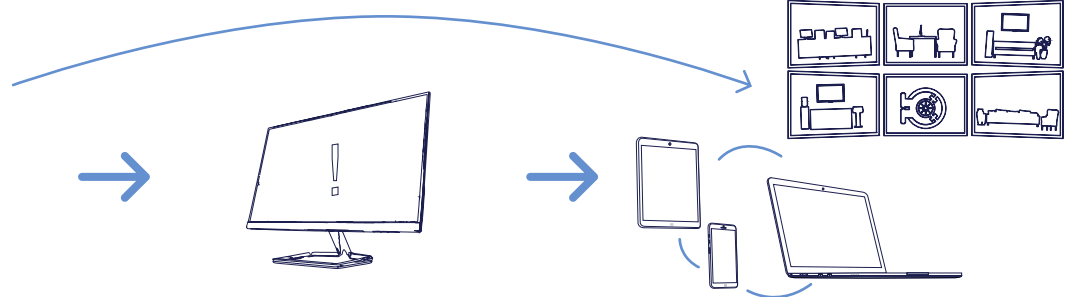
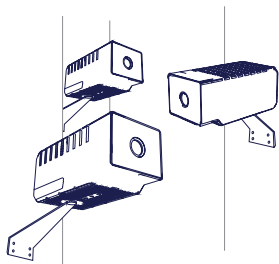
Knife Detected

### Key features

- Edge based computing = minimal lag, fast identification
- High end 4K video
- Day and night operation
- ONVIF compliant
- On device storage
- Advance video analytics
- 5G ready, and cellular connectivity
- No cost over-the-air updates to AI and analytics
- Privacy by design – data stays with you

### Market applications

- Residential
- Places of worship
- Retail
- Commercial
- Education campuses
- Entertainment venues
- Public spaces



- Single or multiple cameras per site setup
- Easy to scale
- No need for NVRs or DVRs

- Threat Management System
- Use on any device (desktop, Android, iOS)
- Configure, manage and operate

- Multiple alert options
- Minimal lag due to Edge computing

## Features

<b>Analytics</b>	<ul style="list-style-type: none"> <li>• Weapon Detection [Handgun, Long Gun, Knife]</li> <li>• Motion Detection</li> <li>• Periodic updates with new and improved analytics</li> </ul>
<b>Computing</b>	<ul style="list-style-type: none"> <li>• Edge-based AI computing</li> <li>• 384 GPU core/48 tensor core</li> </ul>
<b>Resolution</b>	<ul style="list-style-type: none"> <li>• 4K (3840 x 2160) @ 30FPS</li> <li>• Selectable</li> </ul>
<b>Image Sensor</b>	<ul style="list-style-type: none"> <li>• 8 Megapixel</li> <li>• 1/2.8" Progressive</li> <li>• CMOS Rolling Shutter</li> <li>• 120dB HDR</li> </ul>
<b>Lens</b>	<ul style="list-style-type: none"> <li>• Fixed (f=2.8mm)</li> <li>• IR Cut Filter</li> <li>• 120°(D)/102°(H)/56°(V)</li> <li>• F1.8</li> </ul>
<b>IR</b>	<ul style="list-style-type: none"> <li>• Multi, High-Intensity IR LED</li> <li>• Up to 15m range*</li> </ul>
<b>Durability</b>	<ul style="list-style-type: none"> <li>• IP66* for indoor/outdoor use</li> </ul>
<b>Connectivity</b>	<ul style="list-style-type: none"> <li>• 5G (ready) or 4G LTE</li> <li>• WiFi</li> <li>• RJ-45 Ethernet</li> </ul>
<b>Onboard Storage</b>	<ul style="list-style-type: none"> <li>• 512GB</li> <li>• Up to 10 days @ 4K/30FPS</li> <li>• Up to 36 days @ 1080p/30FPS</li> </ul>
<b>Audio</b>	<ul style="list-style-type: none"> <li>• One-way audio recording</li> </ul>
<b>Power</b>	<ul style="list-style-type: none"> <li>• 12V DC Barrel Jack</li> <li>• PoE via CAT5e</li> </ul>
<b>Dimensions</b>	<ul style="list-style-type: none"> <li>• 183mm x87mm x80mm</li> </ul>

\* Feature pending outside certification/validation

## Simple to install

- Mount and power on – only PoE connection required
- Configure camera/settings in minutes via Sentinel TMS or locally-hosted browser
- No additional hardware/software needed
- No port forwarding or network changes required

## Easy to use

- Configure Alerts and notifications
- Minimal training or expertise required
- Updates over-the-air
- Multiple access levels

## Ready to scale

- From single camera to multiple
- One site or many locations
- Integration with Sentinel™ Threat Management System (out of box)

## IoT Architecture

- No-cost updates (firmware, analytics & AI updates)
- Computing is done at the edge, eliminating the cost of large, ongoing cloud processing

**Camera designed and manufactured by First Responder Technologies Inc.**

## How It Works

- 1.** The AI will detect openly carried weapons.
- 2.** Screens objects and not the person (privacy by design).
- 3.** Weapon is tracked through range of vision (single or multiple cameras).
- 4.** Alerts are issued into the Sentinel™ Threat Management system.
- 5.** Real time messages and actions are then invoked (pre-set or customised routine).
- 6.** Threat is intercepted and contained.

## Sentinel™ Threat Management System (TMS)

TMS is First Responder Technologies' cloud-based management software. The simple, clean user interface provides access and management of all cameras, analytics and video storage.

- Sentinel™ Vision – download or use in browser
- Highly customizable central management hub and control centre
- Live monitoring of any connected Sentinel™ Vision camera
- Setup and maintain all cameras, locations and alert procedures
- Video analytics and remote monitoring interface
- Access on desktop or mobile, or any connected device
- Monthly subscription

